

Museum of Contemporary Art Tokyo

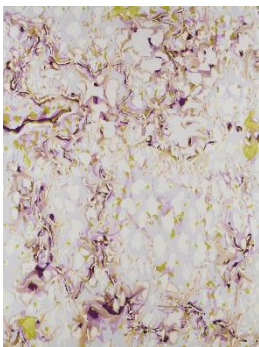
# MOT Collection 30th Anniversary Exhibit Multiple Self-portraits Special Feature NAKANISHI Natsuyuki IKEUCHI Akiko: Arc and Catenary

December 25, 2025 – March 29, 2026

2025 marks 30 years of the Museum of Contemporary Art Tokyo. The MOT collection now consists of approximately 6000 works ranging from modern to contemporary, with an emphasis on postwar art. This exhibition is made up of two displays that shed light on the endeavors of artists in the collection, primarily focusing on recently added works.

On the 1st floor, “Multiple Self Portraits” offers a multidimensional survey of images related to multiple selves, depicted via art masterpieces, history, and everyday life. Exhibits include a special display, incorporating loan items, featuring three artists: MORIMURA Yasumasa, plus YUASA Ebosi, who produces work under the guise of a fictitious painter; and MATSUI Erina, who views self-portraits, including some weird and wonderful faces, as a tool for communication. The new acquisitions from Yuasa and Matsui will have their first showing here, and the space will also present works from other artists such as MIYAGI Futoshi, YOKOYAMA Yuichi, KAIHATSU Yoshiaki, TOYOSHIMA Yasuko, KWAK Duck Jun, and Andy WARHOL.

On the 3rd floor is “Special Feature NAKANISHI Natsuyuki, IKEUCHI Akiko: Arc and Catenary,” an introduction to the artistic realms of the eponymous artists. Nakanishi, who was the first Japanese artist to stage a solo show at the museum, and Ikeuchi, known for her installations using silk thread, both make works that originate in their own bodies in the here and now, yet possess an expansiveness hinting at a realm beyond those physical limits. Ikeuchi will also create a new work on-site to mix with a display of new acquisitions from both artists, allowing visitors to experience the resonance between different works on display.



Left: **08** NAKANISHI Natsuyuki

*Softly Reductive I*, 1996

©NATSUYUKI NAKANISHI

Right: **09** IKEUCHI Akiko, *Knotted Thread-*

*White-From arc from 330cm high-every 1cm-*  
2010

Installation view of *IKEUCHI Akiko Exhibition*,  
gallery21yo-j

## Artists

IKEUCHI Akiko, KAIHATSU Yoshiaki, KWAK Duck Jun, TOYOSHIMA Yasuko, MATSUI Erina, MINAMIKAWA Shimon, MIYAGI Futoshi, MORIMURA Yasumasa, YUASA Ebosi, YOKOYAMA Yuichi, Andy WARHOL, and others.

## Highlights

- On the 1st floor, an eclectic range of works by artists in the museum's collection, selected with the traditional framework of the self-portrait in mind.
- A special display, including loan works, featuring three artists: MORIMURA Yasumasa, plus new additions MATSUI Erina and YUASA Ebosi. A first collection show outing also for works by YOKOYAMA Yuichi, MIYAGI Futoshi, KAIHATSU Yoshiaki and others.
- A special exhibit by NAKANISHI Natsuyuki and IKEUCHI Akiko on the 3rd floor offering an immersive, resonant experience of works by the two, including a number on display for the first time.
- Paintings by NAKANISHI Natsuyuki from around 1960 to his final years; a mix of new acquisitions and works on loan. 2026 marks a decade since the artist's death, and this is an excellent opportunity to revisit his career.
- Known for installations that use silk thread to give visual expression to the invisible forces of nature, movement and expansion in spaces, IKEUCHI Akiko makes her collection show debut here, primarily with new work created on-site.

## Information

Exhibition Period:	Thursday, December 25, 2025 – Sunday, March 29, 2026
Closed:	Mondays (except Jan 12 and Feb 23), New Year's Holidays (Dec 28, 2025 to Jan 1, 2026), Jan 13, and Feb 24
Opening Hours:	10 AM – 6 PM (Tickets available until 30 minutes before closing.)
Admission:	Adults – 500 yen / University & College Students – 400 yen / High School Students, Over 65 – 250 yen / Free for under Junior High School Students & Temporary Exhibition ticket holders / Elementary School Students & Younger – free
Venue:	Museum of Contemporary Art Tokyo, Collection Gallery
Organized by	Tokyo Metropolitan Government, Museum of Contemporary Art Tokyo operated by Tokyo Metropolitan Foundation for History and Culture
Curated by	FUJII Aki, CHINZEI Yoshimi, MIZUTA Yuko (MOT)

## Also on view

- *SOL LEWITT: OPEN STRUCTURE*

December 25, 2025 – April 2, 2026

- *Tokyo Contemporary Art Award 2024-2026 Exhibition “Wetland”*

December 25, 2025 – March 29, 2026

- *mission ∞ infinity / space + quantum + art*

January 31 – May 6, 2026

To request publicity images, please contact our Public Relations team with the number of the desired image.



Left: **01** YUASA Ebosi, *Self-Portrait in Military Attire*, 2022  
Collection of the Takamatsu Art Museum [Special Exhibit]

Right: **02** MORIMURA Yasumasa, *Ego Symposion*, 2017  
Collection of the Artist [Special Exhibit]



**03** MATSUI Erina, *Imitation Supper*, 2023



Left: **04** MIYAGI Futoshi, *A Romantic Composition*, 2015

Right: **05** YOKOYAMA Yuichi, *Beasts and Ourselves*, 2005–2007  
Installation view of *EARTH DAY*, ANOMALY  
Photo: Ichiro Mishima ©Yuichi Yokoyama Courtesy of ANOMALY



Left: **06** NAKANISHI Natsuyuki  
*Clothespins Assert Churning Action*, 1983  
[Partially reproduced in c.1981]  
Photo: Keizo Kioku  
©NATSUYUKI NAKANISHI

Right: **07** IKEUCHI Akiko  
*Knotted Thread-red-Φ1.4cm-Φ720cm*, 2021  
Installation view of *Or Gathering the Energies of the Earth*,  
Fuchu Art Museum  
Photo: Tomoki Imai